


# SHARP

## A Series

Professional Installation Projectors ideal for corporate, higher education and museum applications

A824U/A104U

### ▶ Timetable

|  | Monday         | Tuesday      | Wednesday                                                                          |  |
|--|----------------|--------------|------------------------------------------------------------------------------------|--|
|  | 13:00 - 17:00  | 9:00 - 10:00 | 9:00 - 11:00                                                                       |  |
|  | 1177-A         | 1327-B       | 2377-C                                                                             |  |
|  | Basic Calculus | Calculus -1  |  |  |
|  |                |              | 13:00 - 17:00                                                                      |  |

**4K UHD**  
READY

*laser*  
light source

# LCD laser installation projectors deliver extreme brightness and keeps audiences engaged in conference rooms, auditoriums and sanctuaries

## Why It Works for You

- Multi-screen wow factor - Seamlessly support Picture-by-Picture or Picture-in-Picture, and use TileMatrix to power 4Kx2K resolution across four projectors - no extra hardware needed.
- Effortless scalability - Built-in daisy chain and edge-blending let you expand visuals and merge multiple images into one seamless experience.



## Integrated for Smarter Performance

- 4K-Ready Brilliance - Experience stunning 4K 60P playback powered by Sharp's proprietary video processing chip. Enjoy HDR10 and BT.2020 content from Ultra HD Blu-ray and 4K broadcasts with every detail intact.
- Seamless Control - Preloaded with AMX Beacon, Crestron Roomview, Extron XTP, and PJ Link for full system integration.
- Lower Install Costs - Native competitor command support eliminates expensive reprogramming, making setup faster and more affordable.

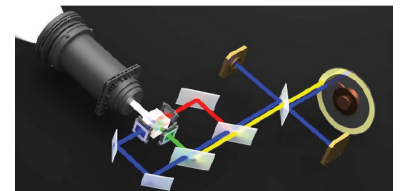
## Flexible Installation, Your Way

- Swap lenses with ease - Motorized bayonet-style lenses make changes quick, with throw distances from 2.5 to 68.5 ft.
- Ultra-short throw option - The new lens lets you mount the projector above the screen or even above the ceiling line for a clean, hidden setup.
- Any angle, any space - Roll-free design supports portrait orientation and adapts to almost any environment.



## Laser Power

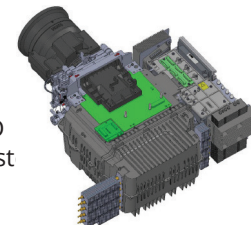
- Instant on - No wait time, images appear immediately after startup.
- Best-in-class balance - Dual blue lasers deliver consistent color and white balance throughout the projector's life.
- Built to last - Inorganic optical components extend reliability and peace of mind.



## Virtually Maintenance Free

- Filter free design.
- IP5X certified Sealed LCD cooling system prevents dust from reaching the optics and eliminates the need for a filter.
- Peace of mind - No dust artifacts, no image degradation, just long-lasting performance.

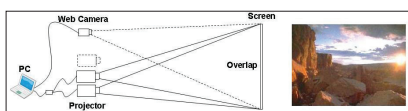
Sealed LCD  
Cooling Syst



## Brighter, Safer Visuals

Boost brightness up to 68,000 lumens with built-in stacking correction (up to four projectors) - perfect for massive screens and high ambient light environments.

Never lose the picture - if one projector goes down, your content stays visible.



## Seamless Big-Screen Impact

Edge blending merges multiple projections into one flawless, high-resolution image - no seams, just a smooth, cinematic display.



## ProAssist™ Total Control, Simplified

Manage multiple projectors with ease using ProAssist™ software.

Fine-tune every detail - from input switching and lens adjustments to edge blending, uniformity, and gamma - all from a simple, intuitive interface.

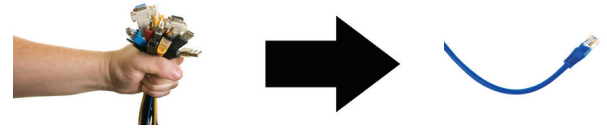
ProAssist™



### Built-In HDBaseT: One Cable, Total Simplicity

Streamline installs with a single cable (up to 100m) carrying uncompressed Full HD video, audio, Ethernet, and control signals.

Cut costs, reduce clutter, and enjoy stunning visuals without extra hardware or complex wiring.



### Stay Connected, Stay Flexible

- Multiple digital inputs for fast, seamless switching between presentations.
- Three audio inputs (HDMI1, HDMI2, and HDBaseT) let you easily add sound for a more engaging experience.

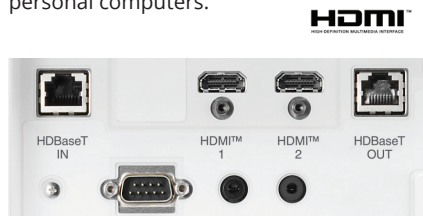
### Remote control

Wired and wireless backlit remote allows you to adjust for complete control of the projector's menu structure in a well lit or dark environment. Direct controls such as lamp mode, aspect ratio, volume and input selection eliminates multiple button pushes.



### Digital Inputs

Among the A Series' wide selection of inputs are dual HDMI w/ HDCP and HDBaseT w/ HDCP for connecting to high-definition sources such as Blu-ray players, cable boxes, satellite receivers and personal computers.



### Cable Cover

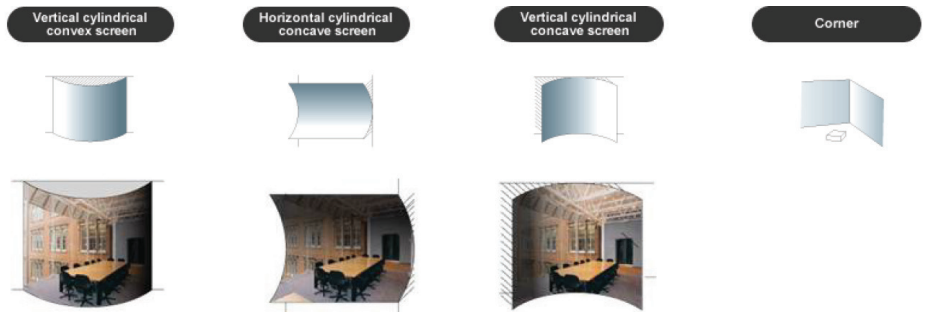
This included accessory creates a clean look for your installation, while hiding signal cables and the power cord.



## Advanced Software Features

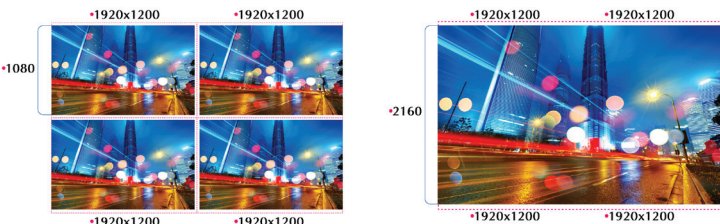
### Geometric Correction

Projecting an image isn't confined to a standard flat screen or wall with the A Series. Geometric correction allows these models to project an image on spheres, cylinders, corner angles and many more non-standard surfaces.



### Screen Splitter

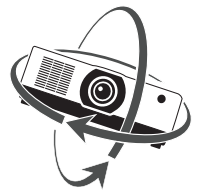
Sharp is committed to bringing the latest and greatest innovation to projectors. Multi-display capabilities and TileMatrix technologies are integrated into the new A Series projectors. This processing is all done internally and therefore eliminates the additional hardware typically required to produce a beautiful 4K resolution image.



Screen Splitter (Multi Display) by Daisy Chain

### Roll Free

When installation requirements dictate the projector needs to be placed at different angles the A Series with Roll Free capabilities assures it is the correct projector of choice.



### Cornerstone

Enhanced keystone correction allows for horizontal, vertical and diagonal image correction for aligned images even when the projector is set up at an angle to the screen.



## Unique Features That Make a Difference

**Maintenance made easy** – IP5x sealed LCD cooling system eliminates filters, cutting ongoing maintenance and lowering total cost of ownership.

**Simplified connectivity** – HDBaseT in/out lets video, audio, and control signals pass between projectors effortlessly.

**Quiet, focused experience** – Low-noise operation keeps audiences engaged without distractions.

**Seamless integration** – Competitor command support reduces the need for reprogramming, saving time and installation costs.

## Warranty

Registered owners receive a five (5) years or 20,000 hours (whichever comes first) parts and labor warranty including InstaCare next business day exchange.

## In the Box

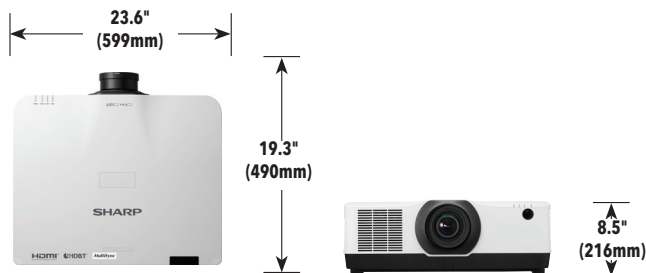
Remote control, batteries, power cord, cable cover, quick start guide, product registration card.

## Accessories

|                 |                                                   |
|-----------------|---------------------------------------------------|
| RMT-PJ40        | Replacement Remote Control                        |
| Optional Lenses | XP-40ZL, XP-41ZL, XP-43ZL, XP-44ML, XP-50ZL       |
| IPJ2000CM       | Ceiling Mount                                     |
| AEC006009       | Adjustable Extension Column, 6" - 9"              |
| AEC012018       | Adjustable Extension Column, 12" - 18" Adjustable |
| AEC0203         | Extension Column, 2' - 3'                         |
| AEC0305         | Adjustable Extension Column, 3' - 5'              |
| XP-02LK         | Mounting Bracket for XP-44ML                      |

## Ordering Model Numbers

|            |            |
|------------|------------|
| XP-A824U-B | XP-A104U-B |
| XP-A824U-W | XP-A104U-W |



|                                                 |                                      | XP-A824U                                                                                                    | XP-A104U                                                                   |  |
|-------------------------------------------------|--------------------------------------|-------------------------------------------------------------------------------------------------------------|----------------------------------------------------------------------------|--|
| Display Technology                              |                                      | 0.76" LCD                                                                                                   |                                                                            |  |
| Light Output (lumens)                           | Brightness (typical)                 | 8,200 Lumens                                                                                                | 10,000 Lumens                                                              |  |
|                                                 | Brightness (maximum)                 | 8,600 Lumens                                                                                                | 10,500 Lumens                                                              |  |
| Resolution                                      | Screen                               | WUXGA 1920x1200                                                                                             |                                                                            |  |
|                                                 | Maximum                              | 4K 4096 x 2160                                                                                              |                                                                            |  |
| Aspect Ratio                                    |                                      | 16:10 (Supports 4:3, 16:9, 21:9)                                                                            |                                                                            |  |
| Contrast Ratio (up to)                          |                                      | 3,000,000:1 (with Dynamic Contrast)                                                                         |                                                                            |  |
| Laser Life (up to)                              |                                      | 20,000 hours                                                                                                |                                                                            |  |
| Screen Size (diagonal)                          |                                      | XP-50ZL, XP-40ZL, XP-41ZL, XP-43ZL: 60 to 500 in. / 1.52 to 12.7m, XP-44MK-02: 97-400 in. / 2.46 to 10.16 m |                                                                            |  |
| Throw Ratio                                     | XP-44ML                              | 0.32:1                                                                                                      |                                                                            |  |
|                                                 | XP-50ZL                              | 0.6-0.76:1                                                                                                  |                                                                            |  |
|                                                 | XP-40ZL                              | 0.79 - 1.11:1                                                                                               |                                                                            |  |
|                                                 | XP-41ZL                              | 1.30 - 3.02:1                                                                                               |                                                                            |  |
|                                                 | XP-43ZL                              | 2.99 - 5.93:1                                                                                               |                                                                            |  |
| Projection Distance                             |                                      | 2.5 to 68.5 ft. / 0.74 to 20.9m                                                                             |                                                                            |  |
| Projection Angle                                |                                      | 10.3 to 10.8° tele / 13.7 to 14.5° wide                                                                     |                                                                            |  |
| Lens                                            | Zoom                                 | Motorized                                                                                                   |                                                                            |  |
|                                                 |                                      | XP-44ML                                                                                                     | 1.0x                                                                       |  |
|                                                 |                                      | XP-50ZL                                                                                                     | 1.25x                                                                      |  |
|                                                 |                                      | XP-40ZL                                                                                                     | 1.4x                                                                       |  |
|                                                 |                                      | XP-41ZL                                                                                                     | 2.3x                                                                       |  |
|                                                 | XP-43ZL                              | 2.0x                                                                                                        |                                                                            |  |
|                                                 | Focus                                | XP-44ML                                                                                                     | Motorized zoom / focus, F=2.0, f= 6.27, 6.8 lbs. / 3.1 kg                  |  |
|                                                 |                                      | XP-50ZL                                                                                                     | Motorized zoom / focus, F=1.9 to 2.1, f= 49.7 to 99.8mm, 5.5 lbs. / 2.5 kg |  |
|                                                 |                                      | XP-40ZL                                                                                                     | Motorized zoom / focus, F=2.0 to 2.5, f= 13.3 to 18.6mm, 3.5lbs. / 1.6 kg  |  |
|                                                 |                                      | XP-41ZL                                                                                                     | Motorized zoom / focus, F=1.7 to 2.0, f= 21.8 to 49.8mm, 3.7 lbs. / 1.7 kg |  |
| XP-43ZL                                         |                                      | Motorized zoom / focus, F=2.2 to 2.6, f= 49.7 to 99.8mm, 3.7 lbs. / 1.7 kg                                  |                                                                            |  |
| Shift                                           | +50/-10% Vertical, +/-20% Horizontal |                                                                                                             |                                                                            |  |
| Shutter                                         | Laser Shutter                        |                                                                                                             |                                                                            |  |
| Keystone Correction                             |                                      | +/- 40° horizontal, +/-40° vertical                                                                         |                                                                            |  |
| Synchronization Range                           | Horizontal                           | Analog: 15-100kHz, Digital: 15-153kHz                                                                       |                                                                            |  |
|                                                 | Vertical                             | Analog: 48-120Hz, Digital: 24-120Hz                                                                         |                                                                            |  |
| Supported Video Standards                       |                                      | NTSC, NTSC4.43, PAL, PAL-60, PAL-M, PAL-N, SECAM                                                            |                                                                            |  |
| SD/HD Video Signal Compatibility                |                                      | 480i, 480p, 576i, 576p, 720p, 1080i, 1080p, 4K                                                              |                                                                            |  |
| PC Signal Compatibility                         |                                      | VGA, SVGA, XGA, SXGA, SXGA+, UXGA, WUXGA, Quad HD                                                           |                                                                            |  |
| Macintosh Compatibility                         |                                      | Yes                                                                                                         |                                                                            |  |
| Input Terminals                                 | RGB1 (digital)                       | HDMI (V2.0) w/HDCP (V1.4/2.2)                                                                               |                                                                            |  |
|                                                 | RGB2 (digital)                       | HDMI (V2.0) w/HDCP (V1.4/2.2)                                                                               |                                                                            |  |
|                                                 | RGB3 (digital)                       | HDBaseT w/HDCP (V1.4/2.2)                                                                                   |                                                                            |  |
| Output Terminals                                | Monitor Out                          | HDBaseT w/HDCP (V1.4/2.2)                                                                                   |                                                                            |  |
|                                                 | Audio Out                            | Stereo Mini Jack                                                                                            |                                                                            |  |
| External Control                                |                                      | 9-Pin D-Sub, Wired Remote, HDBaseT, RJ-45, USB (USB 2.0)                                                    |                                                                            |  |
| Sync Compatibility                              |                                      | Separate Sync / Composite Sync / Sync on G                                                                  |                                                                            |  |
| Power Requirements                              |                                      | 100-240V AC, 50/60 Hz                                                                                       |                                                                            |  |
| Input Current                                   |                                      | 8.6A - 3.8A                                                                                                 | 10.5A - 4.6A                                                               |  |
| Power Consumption                               |                                      |                                                                                                             |                                                                            |  |
| (ECO off/ECO Mode/Standby/Standby-Power Saving) |                                      | 635W / 515W / 0.8W / 0.22W                                                                                  | 750W / 610W / 0.8W / 0.22W                                                 |  |
| Installation Orientation                        |                                      | Floor/Front, Floor/Rear, Ceiling/Front, Ceiling/Rear                                                        |                                                                            |  |
| Product Dimensions (WxDxH)                      |                                      | 23.6 x 8.5 x 19.3 in. / 599 x 216 x 490 mm                                                                  |                                                                            |  |
| Net Weight                                      |                                      | 53.1 lbs. / 24.1 kg                                                                                         |                                                                            |  |
| Shipping Dimensions (WxDxH)                     |                                      | 28.9 x 14.1 x 24.8 in. / 735 x 359 x 631 mm                                                                 |                                                                            |  |
| Gross Weight                                    |                                      | 63.3 lbs. / 28.7 kg                                                                                         |                                                                            |  |
| Fan Noise                                       |                                      | 30 dB normal / 28 dB eco                                                                                    | 35 dB normal / 32 dB eco                                                   |  |
| Regulations                                     | US                                   | USA UL60950-1: 2005+A1: 2009+A2: 2013, IEC 60825-1:2014 (Ed.3), FCC Part15 Subpart B(ANSI C63.4.2014)       |                                                                            |  |
|                                                 | Canada                               | CAN/CSA C22.2 No.62368-1-18,3rd Edition, ICES-003 Issue 7(ANSI C63.4-2014)                                  |                                                                            |  |
| Operating                                       | Altitude                             | 0 to 3650 m (12,000 ft)                                                                                     |                                                                            |  |
|                                                 | Temperature                          | 32-104°F / 0-40°C                                                                                           |                                                                            |  |
|                                                 | Humidity                             | 20 to 85% Humidity (Non-Condensing)                                                                         |                                                                            |  |
| Storage                                         | Altitude                             | 0-12,000m / 0-39,370ft (above sea level)                                                                    |                                                                            |  |
|                                                 | Temperature                          | 14-122°F / -10 50°C                                                                                         |                                                                            |  |
|                                                 | Humidity                             | 20% - 80% (non-condensing)                                                                                  |                                                                            |  |

\* Lens does not ship with the projector. Additional accessories are available, including screens, carts, mount accessories and replacement cables. Visit <https://business.sharpusa.com/> for details.



SHARP ELECTRONICS CORPORATION  
100 Paragon Drive, Montvale, NJ 07645  
1-800-BE-SHARP • www.sharpusa.com

©2025 Sharp Electronics Corporation. All rights reserved. Sharp is a registered trademark of Sharp Corporation and/or its affiliated companies. All other trademarks are the property of their respective owners.